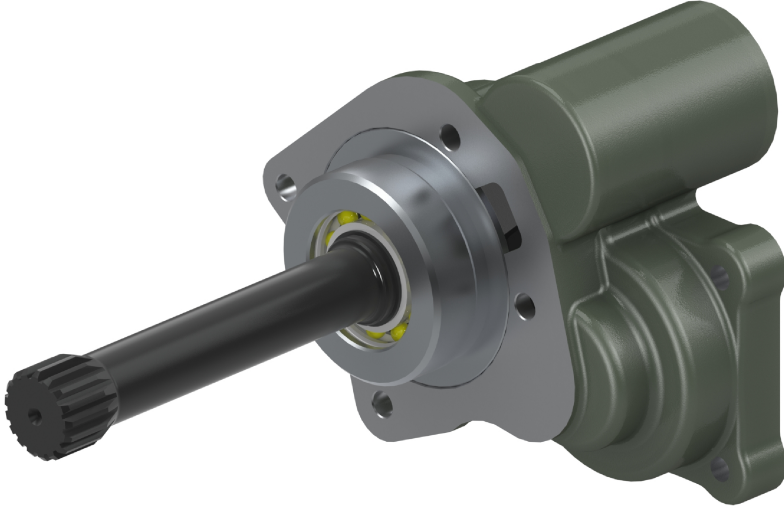


PTO MERCEDES UNIMOG ISO
PTO MERCEDES UNIMOG ISO

PTO KODU: 20880KOHIL
PTO CODE:

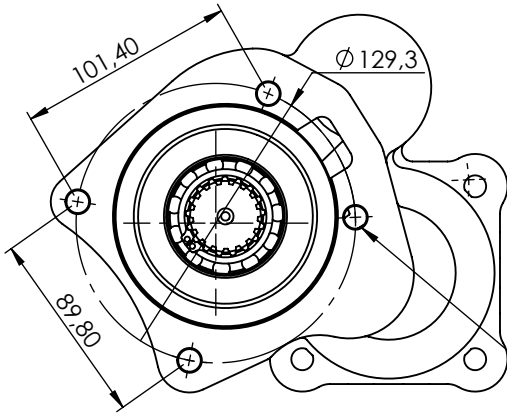


ŞANZIMAN TİPİ:
GEARBOX TYPE:

G3/65-8, G3/65-8/9,29 GP, G3/65-9/13,36
GP, G3/65-9/13,36 GPA, G3/90-8/9, 29 GP

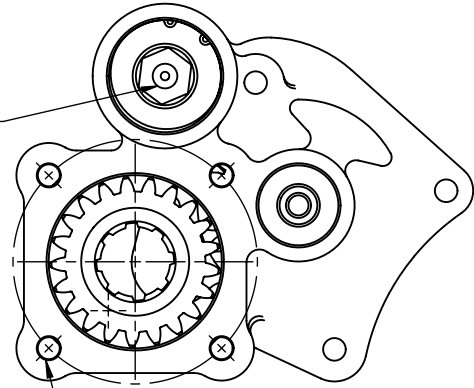
ARAÇLAR:
USED VEHICLES:

MERCEDES: 1217 S20, 1222, 1413, 1419, 1422, 1424,
1425, 1613 K, 1617, 1619, 1624, 1717 R, 1919, 1919 AK,
1922, 2219, 2419, 2224, UNIMOG

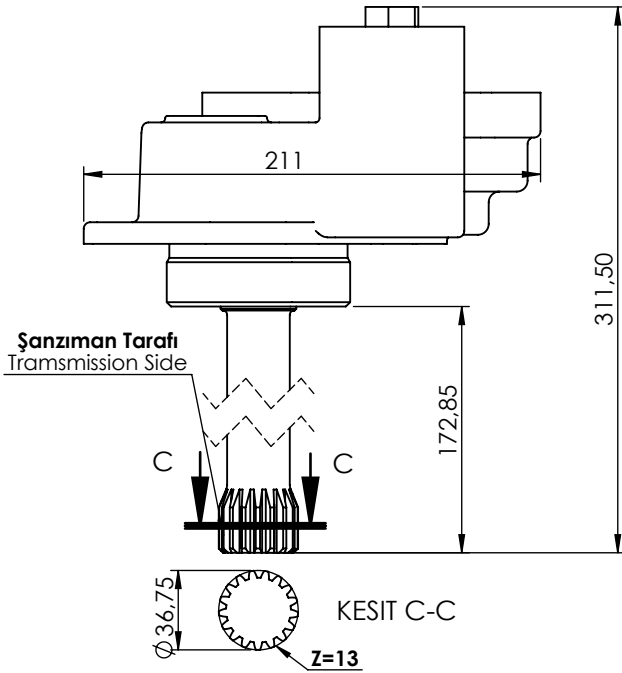


Hava Soketi
Air Connection Thread
G 1/4

PTO Bağlantısı
Connection Holes
for PTO
Ø10,5



Pompa Bağlantısı
Connection Holes
for Pump
M12x1.75



ÇIKIŞ TORKU OUTPUT TORQUE	GÜÇ POWER	AKTARIM ORANI TRANSMISSION RATIO	BAĞLANTI ŞEKLİ MOUNTING TYPE	KONTROL TİPİ CONTROL TYPE	DÖNÜŞ YÖNÜ ROTATION	AĞIRLIK WEIGHT
256 Nm	24,9 Kw	1:1.19	Kuyruk/Rear	Pnömatik/Pneumatic	Sol/Left(ccw)	8,5 Kg

*Bu katalogta bulunan resim ve çizimlerin tüm hakları ZİYA USTA LTD. ŞTİ. ye aittir. Önceden haber vermeksizin değişiklik yapma hakkı saklıdır.
* Rights of the photographs and drawings that existing in catalogue belongs to ZİYA USTA Co. Ltd. Can be changed without noticing.