

Accessories



| | | |
|------------------|-----------------|----------|
| PDM A | Foot brackets | page 102 |
| ANM A | Damping rings | 103 |
| MPDR PDMA - MPDR | Damping rods | 104 |
| OB | Cleaning covers | 105 |
| SE10 | Aluminium tanks | 111 |

Technical data

The foot brackets are proportioned to support IEC Electric motors with B5 flange without feet.

The range is available from size 71 to size 180.

Compatibility with fluids

- Mineral oils types HH-LL-HM-HR-HV-HC, to ISO 6743/4 standard
- Water based emulsions types HFAE-HFAS, to ISO 6743/4 standard
- Water glycol type HFC, to ISO 6743/4 standard: ask for anodized version

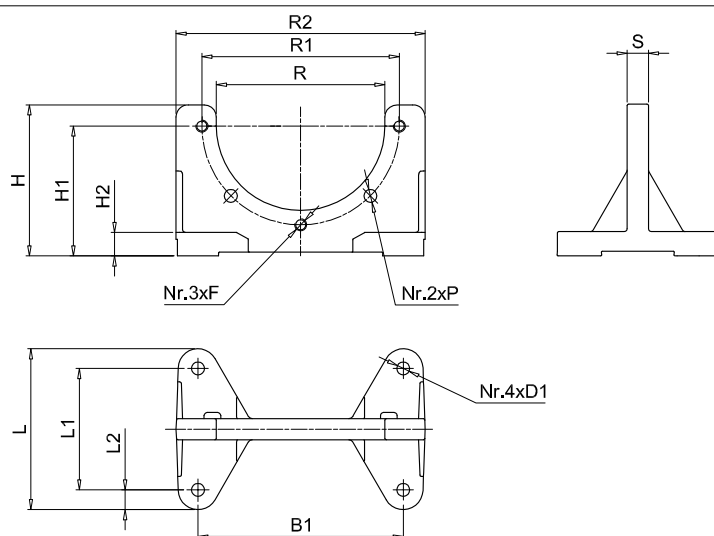
Materials

Foot bracket: pressure die-cast aluminium alloy

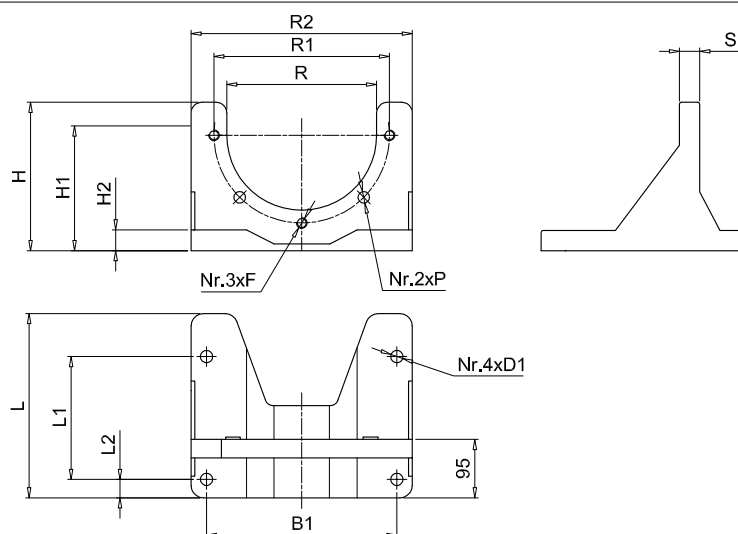
Temperature

From -30 °C to +80 °C

Dimensions



| Foot bracket | B | B1 | R2 | L | L1 | L2 | H | H1 | H2 | R | R1 | S | P | D1 | F | Weight [kg] |
|------------------|-----|-----|-----|-----|-----|----|-----|-----|----|-----|-----|----|------|------|-----|-------------|
| PDM A 160 | 160 | 135 | 180 | 106 | 80 | 13 | 100 | 86 | 16 | 111 | 130 | 14 | 8.5 | 8.5 | M8 | 0.45 |
| PDM A 200 | 200 | 175 | 207 | 128 | 98 | 21 | 128 | 115 | 14 | 146 | 165 | 14 | 11.0 | 11.5 | M10 | 0.60 |
| PDM A 250 | 250 | 220 | 262 | 172 | 130 | 21 | 157 | 145 | 18 | 191 | 215 | 16 | 13.0 | 13.5 | M12 | 1.20 |
| PDM A 300 | 300 | 270 | 320 | 210 | 160 | 25 | 188 | 170 | 18 | 235 | 265 | 20 | 13.0 | 13.5 | M12 | 1.80 |



| Foot bracket | B | B1 | R2 | L | L1 | L2 | H | H1 | H2 | R | R1 | S | P | D1 | F | Weight [kg] |
|------------------|-----|-----|-----|-----|-----|----|-----|-----|----|-----|-----|----|----|----|-----|-------------|
| PDM A 350 | 350 | 310 | 360 | 300 | 200 | 30 | 220 | 200 | 30 | 261 | 300 | 30 | 18 | 13 | M16 | 4.80 |

Technical data

Positioned between the bell-housing motor flange and lid of the tank, they help to reduce the transmission of the vibrations and emission of noise generated by the system.

Damping rings provide a perfect hydraulic sealing actions by virtue of their special profile; damping rings are available for IEC electric motors from size 80 to size 180.

Compatibility with fluids

- Mineral oils types HH-LL-HM-HR-HV-HC, to ISO 6743/4 standard
- Water based emulsions types HFAE-HFAS, to ISO 6743/4 standard
- Water glycol type HFC, to ISO 6743/4 standard: ask for anodized version

Materials

Internal ring: pressure die-cast aluminium alloy

External body: NBR 75 Shore A

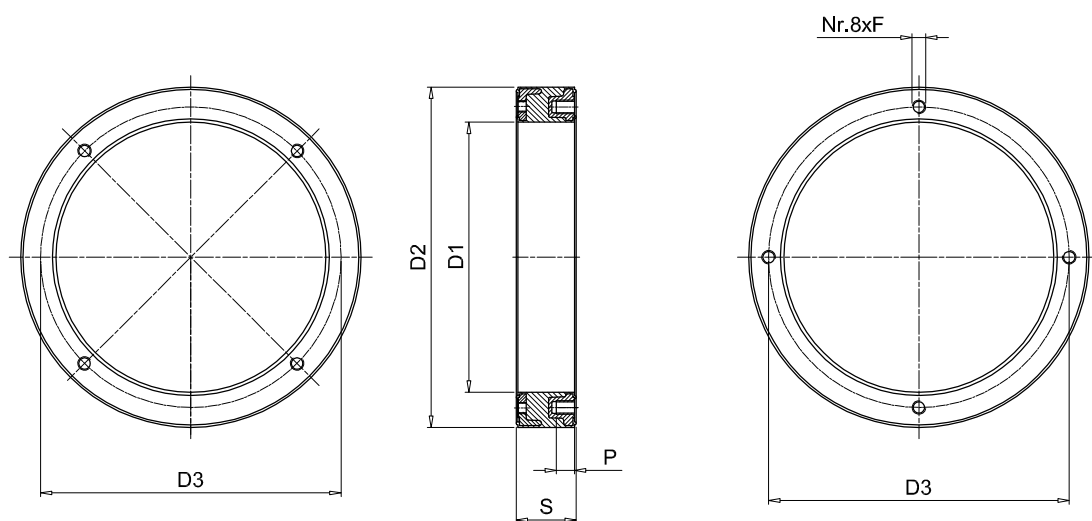
Temperature

From -30 °C to +80 °C

Special Applications

Any applications not covered by the normal indications contained in this catalogue must be evaluated and approved by MP Filtri Technical and Sales Department

Dimensions



| Code | Dimensions [mm] | | | | | | Weight [kg] |
|------------------|-----------------|-----|-----|----|-----|----|-------------|
| | D1 | D2 | D3 | S | F | P | |
| ANM A 200 | 144 | 200 | 165 | 43 | M10 | 16 | 1.70 |
| ANM A 250 | 191 | 250 | 215 | 48 | M12 | 16 | 2.53 |
| ANM A 300 | 238 | 300 | 265 | 53 | M12 | 16 | 2.15 |
| ANM A 350 | 260 | 350 | 300 | 62 | M16 | 20 | 3.95 |

Note: For dimensions other than those indicated in the table, contact MP Filtri Technical and Sales Department

Technical data

Damping rods are element to reduce the transmission of the vibrations and emission of noise generated of the system.

Damping rods are available for IEC Electric motors from size 71 to size 315L and for MP FILTRI foot bracket

Compatibility with fluids

- Mineral oils types HH-LL-HM-HR-HV-HC, to ISO 6743/4 standard
- Water based emulsions types HFAE-HFAS, to ISO 6743/4 standard
- Water glycol type HFC, to ISO 6743/4 standard: ask for anodized version

Materials

Plate: steel black colour

Damping element: NBR 60 Shore A

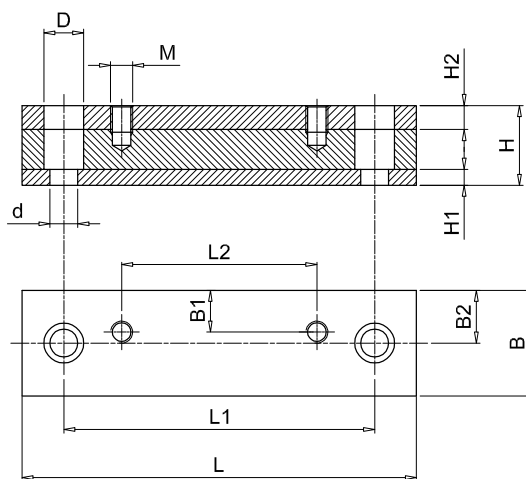
Temperature

From -20 °C to +80 °C

Special Applications

Any applications not covered by the normal indications contained in this catalogue must be evaluated and approved by the MP Filtri Technical and Sales Department

Dimensions



Damping rods for foot brackets PDMA series.

For foot brackets see page 102

| Code | L | L1 | L2 | B | B1 | B2 | H | H1 | H2 | D | d | M | Weight [kg] |
|--------------|-----|-----|-----|----|----|----|----|----|----|----|----|-----|-------------|
| MPDR PDMA160 | 196 | 156 | 80 | 50 | 21 | 25 | 40 | 8 | 12 | 20 | 14 | M8 | 1.5 |
| MPDR PDMA200 | 196 | 156 | 98 | 50 | 21 | 25 | 40 | 8 | 12 | 20 | 14 | M10 | 1.5 |
| MPDR PDMA250 | 240 | 205 | 130 | 50 | 24 | 25 | 40 | 8 | 12 | 20 | 14 | M12 | 2.0 |
| MPDR PDMA300 | 280 | 245 | 160 | 50 | 20 | 25 | 45 | 8 | 12 | 20 | 14 | M12 | 2.5 |
| MPDR PDMA350 | 446 | 400 | 200 | 70 | 35 | 35 | 60 | 15 | 15 | 26 | 14 | M12 | 8.0 |

Damping rods for electrical motors UNEL-MEC

| Code | L | L1 | L2 | B | B1 | B2 | H | H1 | H2 | D | d | M | Weight [kg] |
|-----------|-----|-----|-----|-----|------|----|----|----|----|----|----|-----|-------------|
| MPDR 71 | 196 | 156 | 90 | 50 | 21 | 25 | 40 | 8 | 12 | 20 | 14 | M6 | 1.5 |
| MPDR 80 | 176 | 146 | 100 | 50 | 22 | 25 | 40 | 8 | 12 | 20 | 14 | M8 | 1.7 |
| MPDR 90S | 196 | 156 | 100 | 50 | 24.5 | 25 | 40 | 8 | 12 | 20 | 14 | M8 | 1.7 |
| MPDR 90L | 240 | 205 | 125 | 50 | 24 | 25 | 40 | 8 | 12 | 20 | 14 | M8 | 2.0 |
| MPDR 100L | 240 | 205 | 140 | 50 | 22 | 25 | 40 | 8 | 12 | 20 | 14 | M10 | 2.0 |
| MPDR 132S | 280 | 245 | 140 | 50 | 20 | 25 | 45 | 8 | 12 | 20 | 14 | M10 | 2.5 |
| MPDR 132M | 280 | 245 | 178 | 50 | 20 | 25 | 45 | 8 | 12 | 20 | 14 | M10 | 2.5 |
| MPDR 160M | 340 | 300 | 210 | 70 | 28 | 35 | 60 | 15 | 15 | 26 | 18 | M12 | 6.0 |
| MPDR 160L | 416 | 370 | 254 | 70 | 28 | 35 | 60 | 15 | 15 | 26 | 18 | M12 | 7.5 |
| MPDR 180M | 416 | 370 | 241 | 70 | 35 | 35 | 60 | 15 | 15 | 26 | 18 | M12 | 7.5 |
| MPDR 180L | 446 | 400 | 279 | 70 | 35 | 35 | 60 | 15 | 15 | 26 | 18 | M12 | 8.0 |
| MPDR 200L | 492 | 430 | 305 | 70 | 35 | 35 | 60 | 15 | 15 | 33 | 22 | M16 | 8.9 |
| MPDR 225S | 492 | 430 | 286 | 70 | 35 | 35 | 60 | 15 | 15 | 33 | 22 | M16 | 8.9 |
| MPDR 225M | 492 | 445 | 311 | 70 | 35 | 35 | 60 | 15 | 15 | 33 | 22 | M16 | 8.9 |
| MPDR 250M | 492 | 445 | 349 | 100 | 50 | 50 | 60 | 15 | 15 | 33 | 22 | M20 | 12.5 |
| MPDR 280S | 614 | 570 | 368 | 100 | 50 | 50 | 60 | 15 | 15 | 33 | 22 | M20 | 15.1 |
| MPDR 280M | 614 | 570 | 419 | 100 | 50 | 50 | 60 | 15 | 15 | 33 | 22 | M20 | 15.1 |
| MPDR 315S | 614 | 570 | 406 | 120 | 60 | 60 | 60 | 15 | 15 | 33 | 22 | M24 | 26.5 |
| MPDR 315M | 614 | 570 | 457 | 120 | 60 | 60 | 60 | 15 | 15 | 33 | 22 | M24 | 26.5 |
| MPDR 315L | 704 | 660 | 508 | 120 | 60 | 60 | 60 | 15 | 15 | 33 | 22 | M24 | 29.2 |

Technical data

These pressure die-cast aluminium alloy doors offer superior mechanical strength and are manufactured to DIN 24339 standard. They provide easy access to the inside of the oil tank for inspection and cleaning purposes.

On request and for small quantities, to be agreed with MP Filtri Technical and Sales Department, inspection doors can be supplied with:

- Customer logo.
- Hole cut for visual level indicator.
- Hole cut for visual and electrical level indicator.
- Oil sample plug

Compatibility with fluids

- Mineral oils types HH-LL-HM-HR-HV-HC, to ISO 6743/4 standard
- Water based emulsions types HFAE-HFAS, to ISO 6743/4 standard
- Water glycol type HFC, to ISO 6743/4 standard: ask for anodized version

Materials

Cleaning covers: pressure die-cast aluminium alloy / cast iron

Seal: NBR 70 Shore A

Temperature

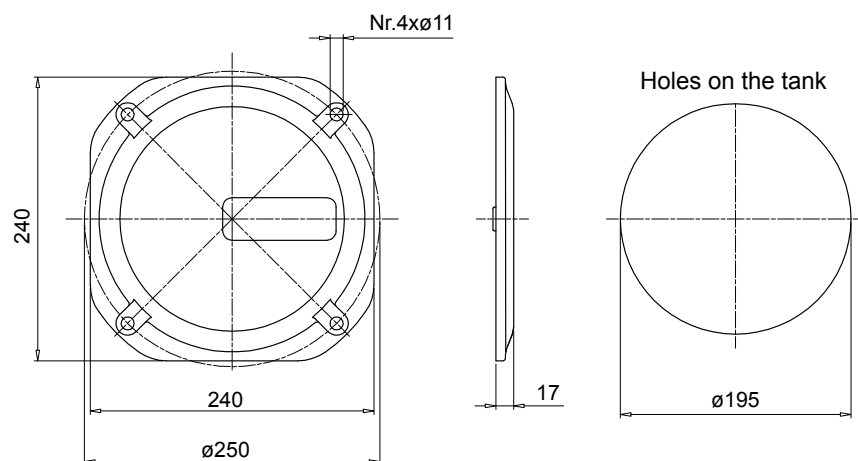
From -30 °C to +80 °C

Special Applications

Any applications not covered by the normal indications contained in this catalogue must be evaluated and approved by MP Filtri Technical and Sales Department

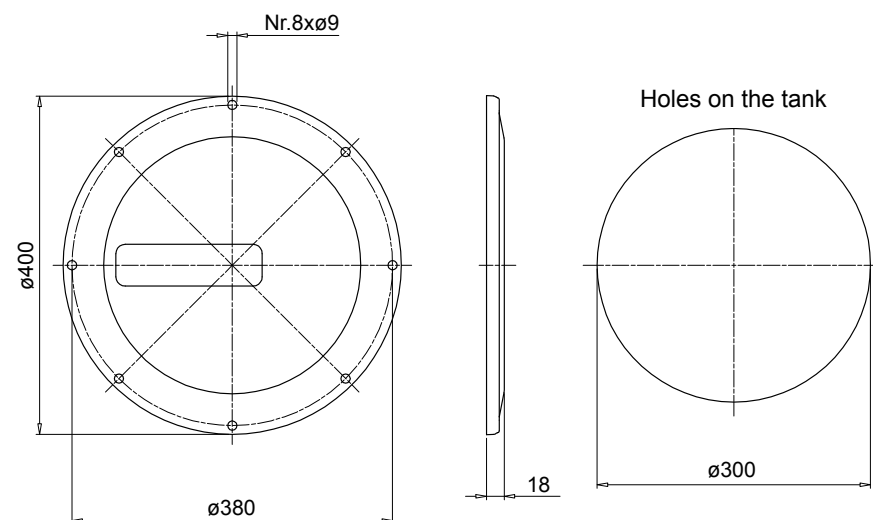
Dimensions

Cleaning cover according to DIN 24339

OB275

| Code | Description | Seal | Weight [kg] |
|-------------------|-------------------|------|-------------|
| OB275P01GN | Door with MP Logo | NBR | 2.06 |
| OB275P02GN | Blank cover | NBR | 2.06 |
| OB275P01GV | Door with MP Logo | FMP | 2.06 |
| OB275P02GV | Blank cover | FMP | 2.06 |

| Code | Description | Weight [kg] |
|------------------|-------------------|-------------|
| OB275P01 | Door with MP Logo | 1.76 |
| OB275P02 | Blank cover | 1.76 |
| GU0275NBR | Seal | 1.76 |
| GU0275VTN | Seal | 1.76 |

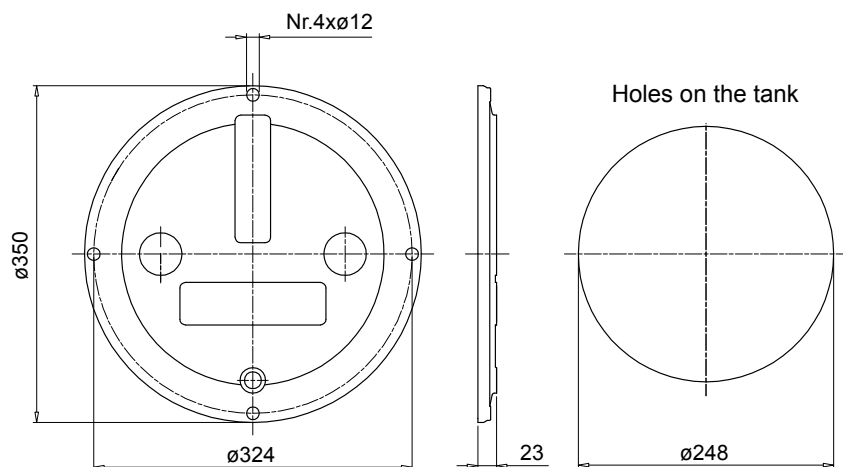
OB400

| Code | Description | Seal | Weight [kg] |
|-------------------|-------------------|------|-------------|
| OB400P01GN | Door with MP Logo | NBR | 3.20 |
| OB400P02GN | Blank cover | NBR | 3.20 |
| OB400P01GV | Door with MP Logo | FMP | 3.20 |
| OB400P02GV | Blank cover | FMP | 3.20 |

| Code | Description | Weight [kg] |
|---------------------|-------------------|-------------|
| OB400P01 | Door with MP Logo | 2.90 |
| OB400P02 | Blank cover | 2.90 |
| GU0400DINNBR | Seal | 2.90 |
| GU0400DINVTN | Seal | 2.90 |

Dimensions

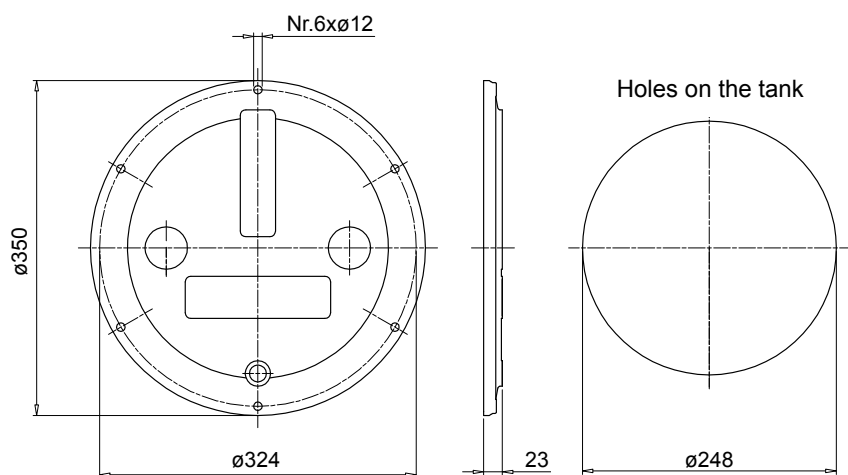
OB350



| Code | Description | Seal | Weight [kg] |
|-------------------|-------------------|------|-------------|
| OB350P01GN | Door with MP Logo | NBR | 2.10 |
| OB350P02GN | Blank cover | NBR | 2.10 |
| OB350P01GV | Door with MP Logo | FMP | 2.10 |
| OB350P02GV | Blank cover | FMP | 2.10 |

| Code | Description | Weight [kg] |
|---------------------|-------------|-------------|
| OB350DIN000 | Door | 1.80 |
| GU0350DINNBR | Seal | 1.80 |
| GU0350DINVTN | Seal | 1.80 |

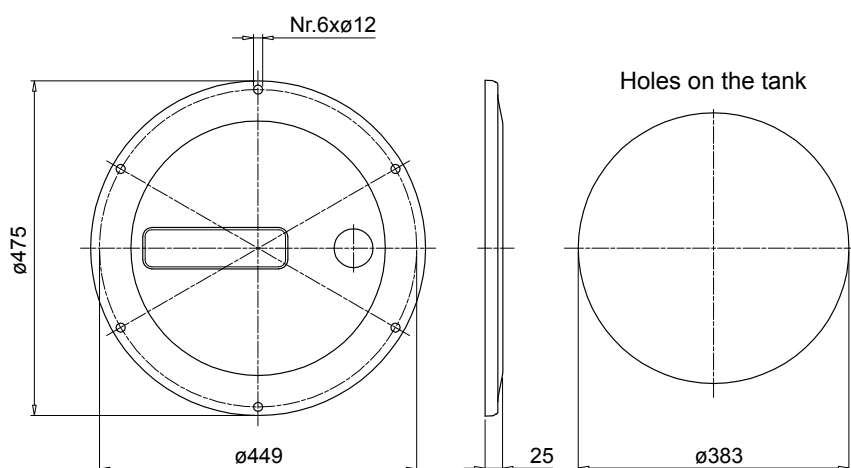
OB356



| Code | Description | Seal | Weight [kg] |
|-------------------|-------------------|------|-------------|
| OB356P01GN | Door with MP Logo | NBR | 2.10 |
| OB356P02GN | Blank cover | NBR | 2.10 |
| OB356P01GV | Door with MP Logo | FMP | 2.10 |
| OB356P02GV | Blank cover | FMP | 2.10 |

| Code | Description | Weight [kg] |
|---------------------|-------------|-------------|
| OB356DIN000 | Door | 1.80 |
| GU0350DINNBR | Seal | 1.80 |
| GU0350DINVTN | Seal | 1.80 |

OB475



| Code | Description | Seal | Weight [kg] |
|-------------------|-------------------|------|-------------|
| OB475P01GN | Door with MP Logo | NBR | 3.70 |
| OB475P02GN | Blank cover | NBR | 3.70 |
| OB475P01GV | Door with MP Logo | FMP | 3.70 |
| OB475P02GV | Blank cover | FMP | 3.70 |

| Code | Description | Weight [kg] |
|---------------------|-------------------|-------------|
| OB475P01 | Door with MP Logo | 3.40 |
| OB475P02 | Blank cover | 3.40 |
| GU0475DINNBR | Seal | 3.40 |
| GU0475DINVTN | Seal | 3.40 |

Visual level indicators LVA series

Technical data

Materials

Transparent amorphous polyamide lens

Nylon guard

Seal: Series A-NBR - Series V-FPM

Operating pressure

Max 1 bar at +80°C

Operating temperature

From -25 °C to +80 °C

Tightening torque

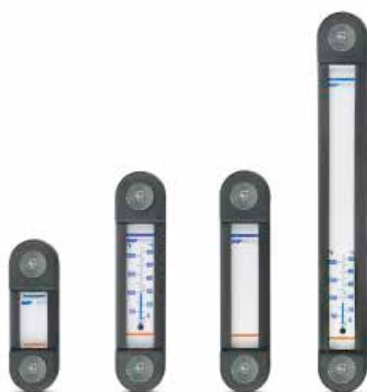
10 N·m max.

Mineral oils

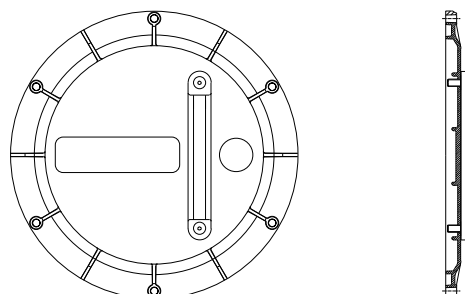
Synthetic oils

Water base emulsions

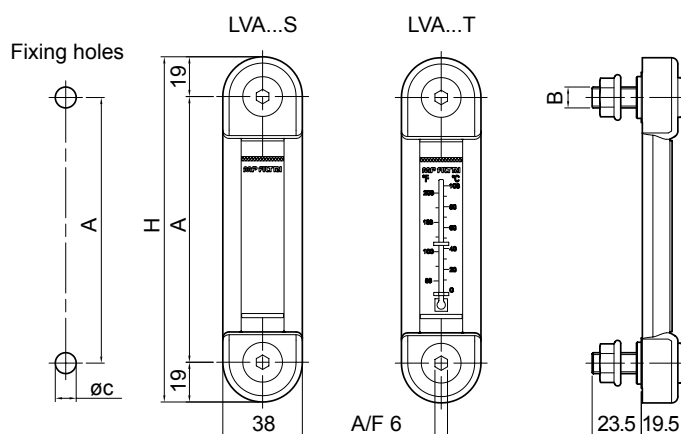
Phosphoric esters



Installation



Dimensions



| Size | A [mm] | H [mm] |
|---------------|--------|--------|
| LVA 10 | 76 | 114 |
| LVA 20 | 127 | 165 |
| LVA 30 | 254 | 292 |

| Type | B [mm] | C [mm] |
|------------------|----------|--------|
| LVA...M10 | M10 | 10.5 |
| LVA...M12 | M12 | 12.5 |
| LVA...U38 | 3/8" UNC | 10.0 |
| LVA...U12 | 1/2" UNC | 13.5 |

Packaging

| Type | Nr. pieces per pack |
|------------|---------------------|
| LVA | 10 |

Preparing for to fit the level on request

| Door code | Level indicator code |
|----------------|----------------------|
| 0B275** | LVA 10** |
| 0B350** | LVA 10** |
| 0B356** | LVA 20** |
| 0B400** | LVA 10** |
| 0B475** | LVA 20** |
| | LVA 30** |

Electrical float level indicators LEG series

Technical data

LEG series electrical level indicators are supplied with a 3-hole fixing flange and a reed switch having NC-NO contacts.

Designed typically for installation on the vertical walls of oil tanks, these instruments can also be mounted to inspection doors of the OB475 series as indicators of minimum and maximum oil levels in the tank.

Warning

To operate correctly, the float must be positioned vertically and at a minimum distance of 35 mm from walls made of ferrous metal.

To change the contact from NC to NO, simply turn the float upside down.

The electrical properties indicated are referred to resistive loads; for capacitive and inductive loads and incandescent lamps, use protection circuits.

DIN 43650 CONNECTOR

Materials

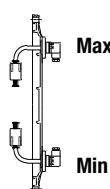
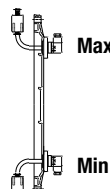
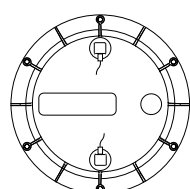
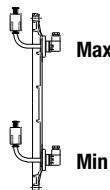
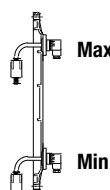
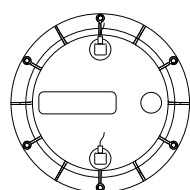
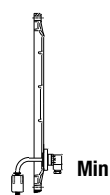
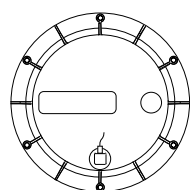
- Flange: aluminum
- Rod: brass
- Float: nylon foam
- Seals: A= NBR - V= FPM

Temperature

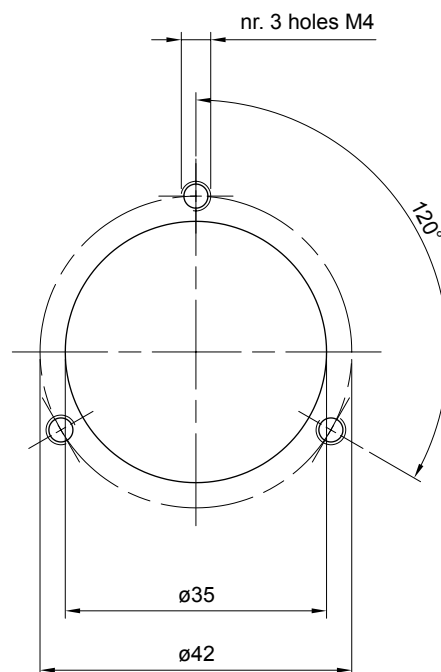
From -15 °C to +80 °C

For temperatures outside this range, contact MP Filtri Technical and Sales Department

Installation



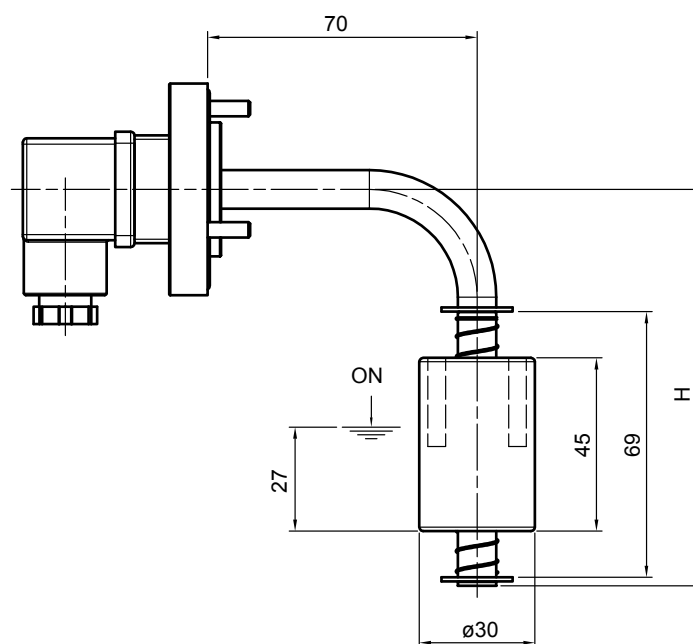
Layout of fixing holes
for LEG level indicator



Note: Arrange the holes according to the position of the level indicator

Prepared for visual indicator - on request

Dimensions



| Size | H [mm] |
|----------------|--------|
| LEG 102 | 103 |
| LEG 200 | 200 |
| LEG 300 | 300 |
| LEG 350 | 350 |

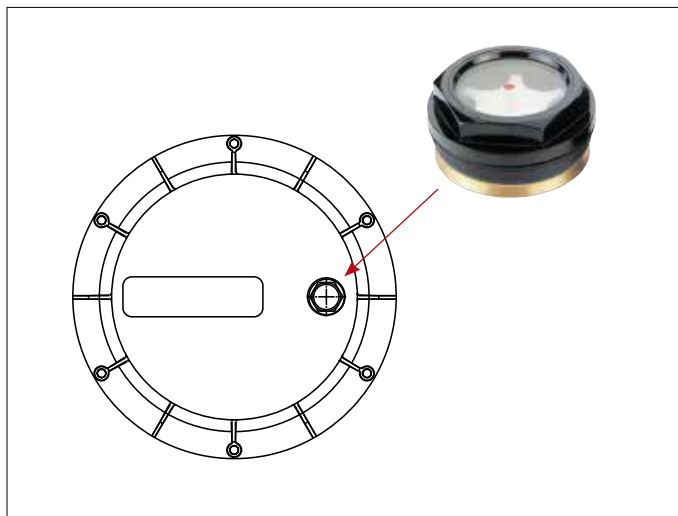
LEG 1 Float



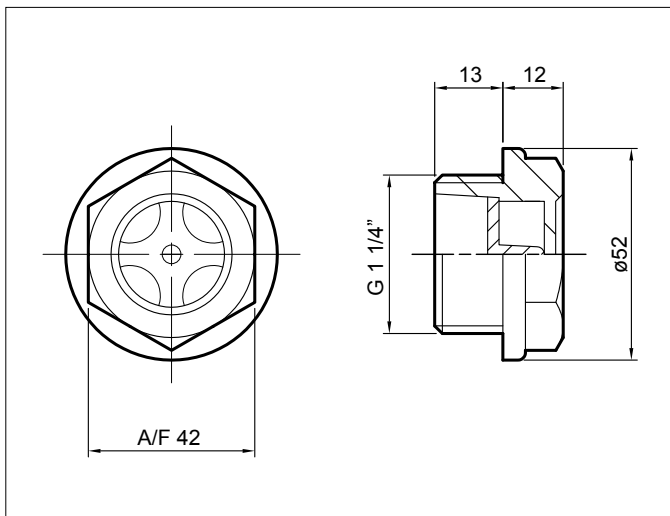
To invert the contact status from NO to NC and vice versa, simply invert the float.

Visual level indicators code LCP42N...S

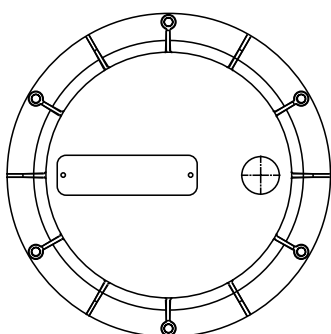
Installation



Dimensions



Available customization



Nameplate with customer logo
Ordering information: **OB475LOGOP05**

The nameplates applied to the new inspection door are identical to those applied to the old door. The difference with the new door is that nameplates are fixed with rivets.

For ordering information codes, minimum order quantities, fixing hole positions and other details not indicated in this publication, contact MP Filtri Technical and Sales Department.

Technical data

Made of pressure die-cast aluminium alloy, these tanks feature superior strength and optimum design and are ideal for compact hydraulic power units.

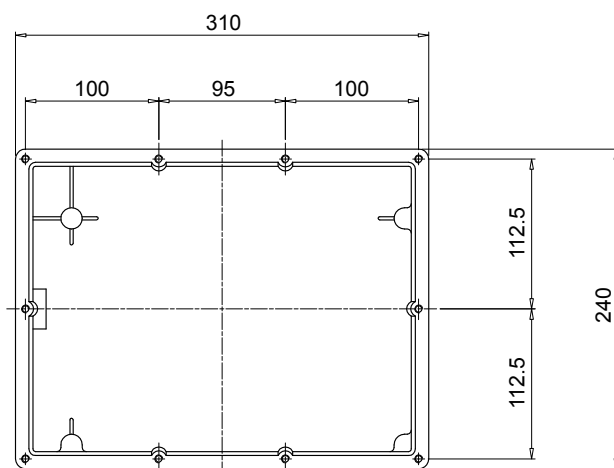
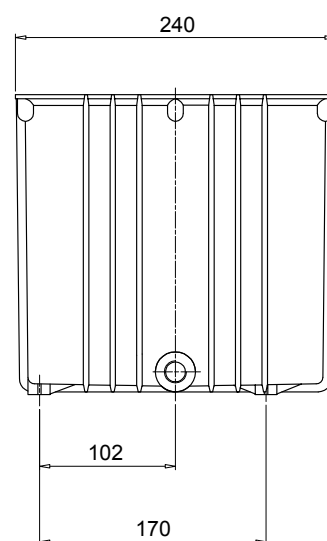
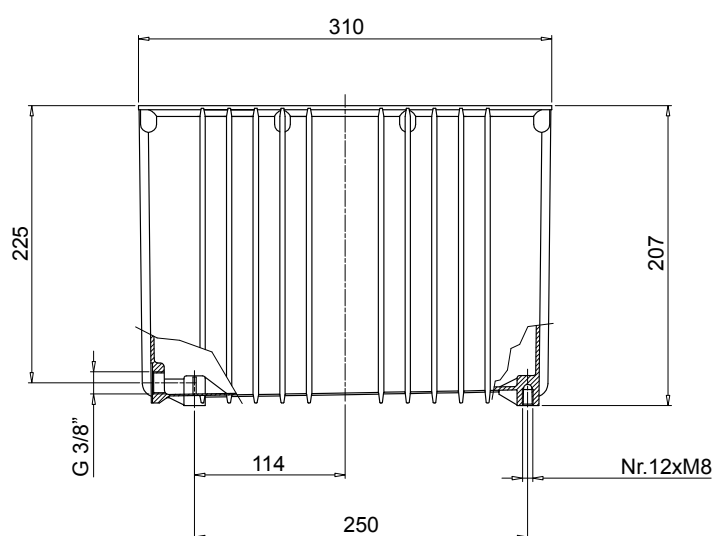
Generously proportioned fins ensure efficient cooling.

The tank is supplied with:

- M6 threaded fixing holes for lid
- feet with M8 threaded fixing holes
- G 3/8" threaded drain hole

The lid is sealed by a gasket made of special paper, which must be ordered separately indicating code "GUS 10.0".

Dimensions



| Code | Weight [kg] |
|---------------|-------------|
| SE10LT | 3.95 |



WORLDWIDE NETWORK

HEADQUARTERS

MP Filtri S.p.A.

Via 1° Maggio, 3
20060 Pessano con Bornago
Milano - Italy

BRANCH OFFICES

MP Filtri U.K. Ltd.

Bourton Industrial Park
Bourton on the Water
GL54-2HQ Gloucestershire

MP Filtri Canada Inc.

8831 Keele Street
Concord, Ontario
L4K 2N1 - Canada

MP Filtri Germany GmbH

Hans-Wilhelmi-Straße
DE-66386 St. Ingbert

ITALFILTRI LLC

Russian Federation

Yurievsky Pereulok 13 a, Building 1
111020 Moscow - Russia

MP Filtri France SAS

Parc d'activités des Chanteraines
8 rue du Commandant d'Estienne d'Orves
Immeuble D3
92390 Villeneuve la Garenne

MP Filtri (Shanghai) Co., Ltd.

1280 Lianxi Road, Bld 8 - 2nd Floor
Shanghai - Pudong
201204 China

MP Filtri U.S.A. Inc.

2055 Quaker Pointe Drive
Quakertown, PA 18951

MP Filtri India Pvt. Ltd.

Plot-7F, Raj Pinnacle,
Beside RMZ Centennial
Brookefield Road, Whitefield
560048 Bangalore

PASSION TO PERFORM



mpfiltri.com