

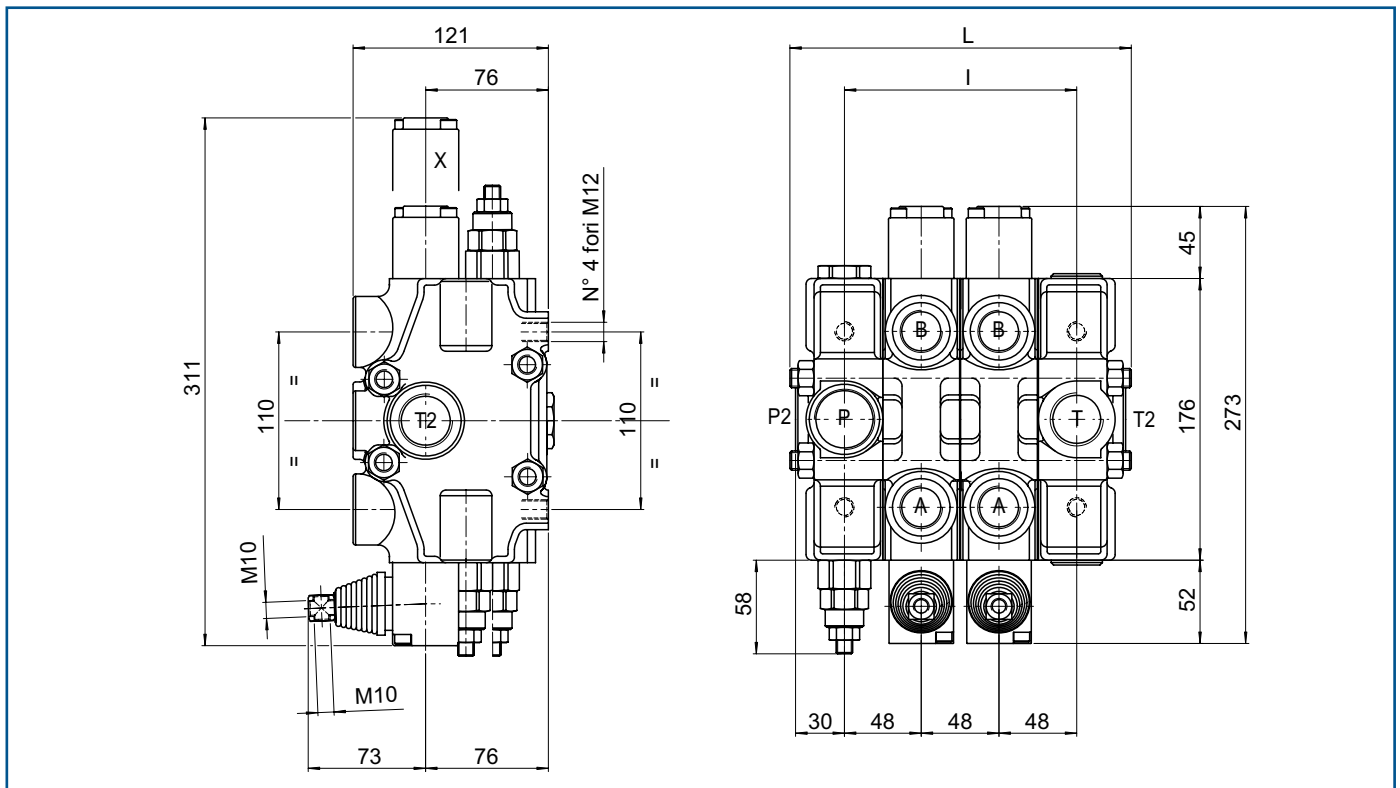
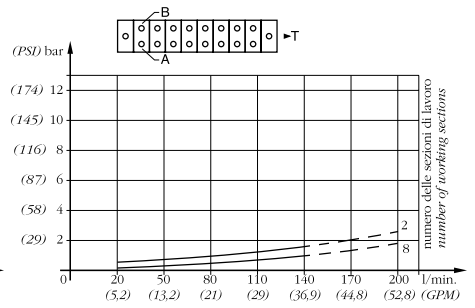
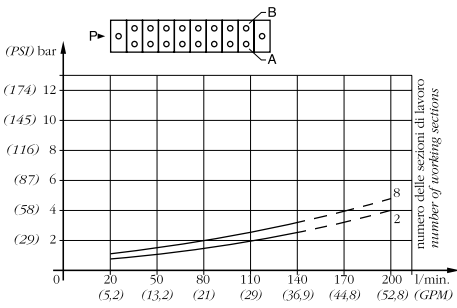
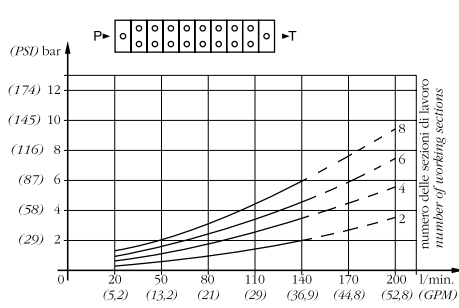
Caratteristiche generali / Technical characteristics		
	l/min	GPM
• Portata nominale / Nominal flow	140	37
• Portata limite / Max flow	180	48
	bar	PSI
• Pressione nominale / Nominal pressure	220	3200
• Pressione max sugli utilizzi / Max pressure on ports	300	4400
• Contropressione max allo scarico / Max pressure in tank-line	40	550



P-T - TEMPERATURA OLIO 50°C - VISCOSITÀ 3,5°E

P-A/B - TEMPERATURA OLIO 50°C - VISCOSITÀ 3,5°E

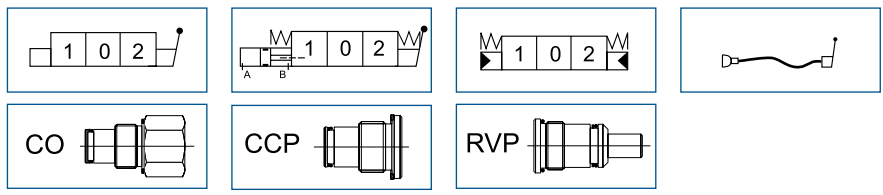
A/B-T - TEMPERATURA OLIO 50°C - VISCOSITÀ 3,5°E



MOD	L	I	Kg
BC150/1	165	96	
BC150/2	213	144	
BC150/3	261	192	
...	

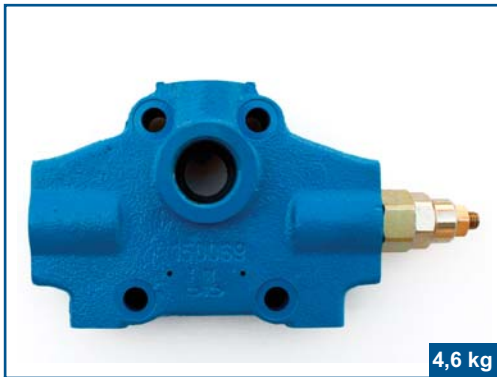
FILETTATURA STANDARD - STANDARD THREADS					
COD	A-B	P	T	P2	T2
G	3/4"	1"	1"	1"	1"
F	1.1/16" - 12	1.5/16" - 12	1.5/16" - 12	1.5/16" - 12	1.5/16" - 12

◀ Su richiesta filettature diverse
Other threads available on request

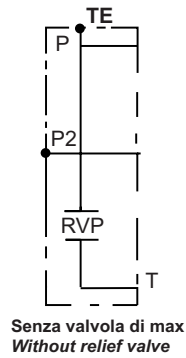
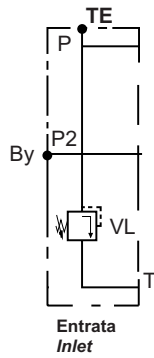


BCI50

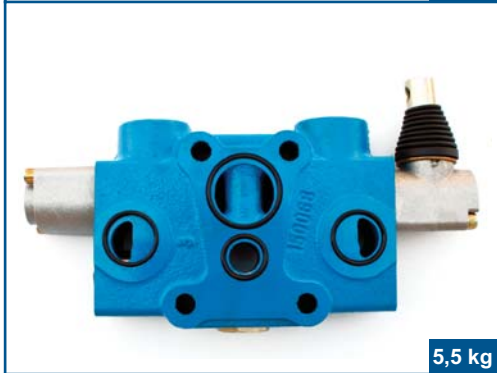
BCI50



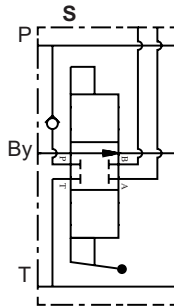
4,6 kg



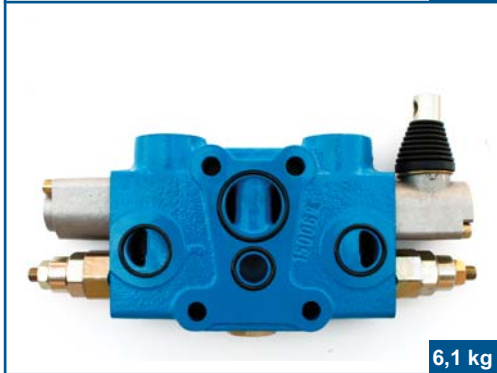
Testata d'entrata
Inlet



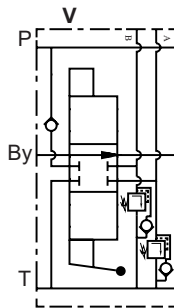
5,5 kg



Elemento standard
Standard element



6,1 kg

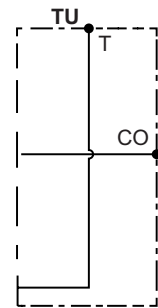
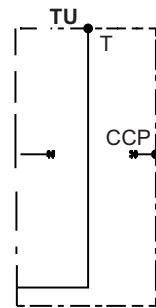
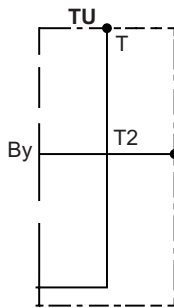


Elemento per valvole ausiliarie
Element for auxiliary valves

- L = Limitatrice di pressione
L = Relief valve
- C = Anticavitazione
C = Anti cavitation
- LC = Limitatrice anticavitazione
LC = Combined



4,3 kg



Testata d'uscita
Outlet

CONFIGURAZIONI DISPONIBILI

AVAILABLE CONFIGURATIONS

COD	CIRCUITO SPOOL TYPE	BM10	BM20	BM30	BM70	BM150	BC35	BC60
			BF20	BM40	BC70	BC150		
			BC20	BF40	BF70	BC180		
			BM25	BM45	BM100			
			BM35	BM50	BC50			
A		●	●	●	●	●		
B		●	●	●	●	●		
C		●	●	●	●	●		
D		●	●	●	●	●		
E		●	●	●	●	●		
F		●	●	●	●	●		
K		●	●	●	●	●		
L				●	●			
M		●	●	●	●	●		
R		●		●	●			
Y			●	●				
Z		●		●	●			
AE			●	●	●		●	●
BE			●	●	●			●
DE			●	●	●		●	●

12		12 VOLT DC			●	●		●	●
24		24 VOLT DC			●	●		●	●

COD	VALVOLAMAX RELIEF VALVE	CAMPO DI TARATURA CALIBRATION FIELD bar (psi)	TARATURA STANDARD CALIBRATION bar (psi)	BM10	BM20	BM30	BM70	BM150	BC35	BC60
					BF20	BM40	BC70	BC150		
					BC20	BF40	BF70	BC180		
					BM25	BM45	BM100			
					BM35	BM50	BC50			
X		10-90 (145-1305)	70 (1015)	●	●	●	●	●	●	●
U		90-250 (1305-3626)	140 (2030)	●	●	●	●	●	●	●
K		150-300 (2175-4351)	200 (2900)	●	●	●	●	●	●	●

Taratura standard effettuata con pompa 5 lt/min.
Standard calibration made with a 5 lt/min. pump

COD	POSIZIONATORE SPOOL CONTROL	BM10	BM20	BM30	BM70	BM150	BC35	BC60
			BF20	BM40	BC70	BC150		
			BC20	BF40	BF70	BC180		
			BM25	BM45	BM100			
			BM35	BM50	BC50			
1		●	●	●	●	●		
2		●	●	●	●	●		
3		●	●	●	●	●		
4		●	●	●	●	●		
5		●	●	●	●	●		
6		●	●	●	●	●		
7		●	●	●	●	●		
8		●	●	●	●	●		
9		●	●	●	●	●		
10		●	●	●	●	●		
11		●	●	●				
12				●	●			
13			●	●				
14				●	●			
16		●	●	●				
1E			●	●	●		●	●
1EA			●	●	●			
1EB			●	●	●			