

TECHNICAL FEATURES AND OPTIONS



Working Temperature
-30 °C / +110 °C

Interchange
DIN / ISO 228

Operating Pressure
Up to 500 Bar

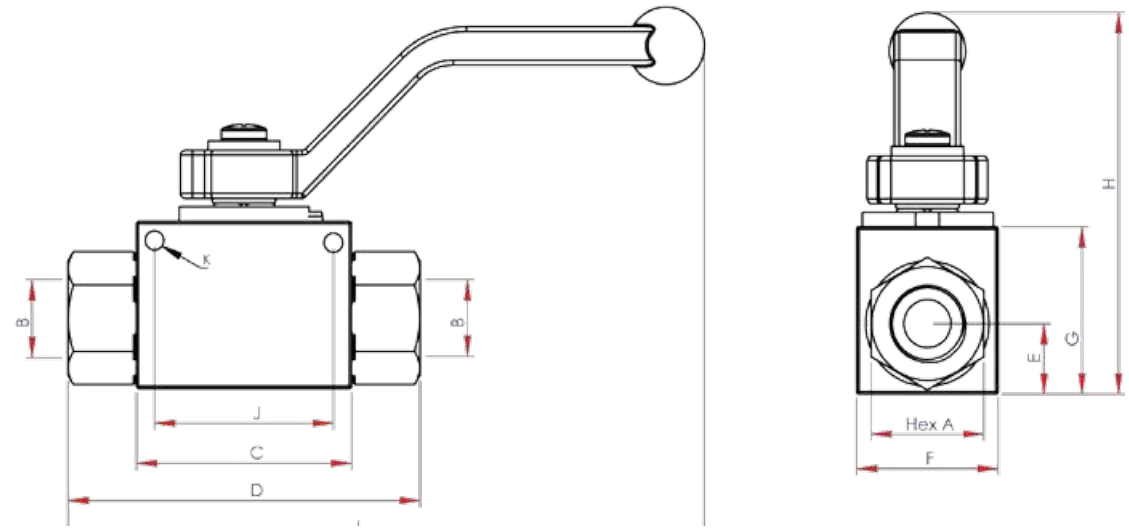
Available Threads
BSP - NPT

Available Sizes
From 1/4" to 1" 1/2

Sealing Description
Nitrile NBR

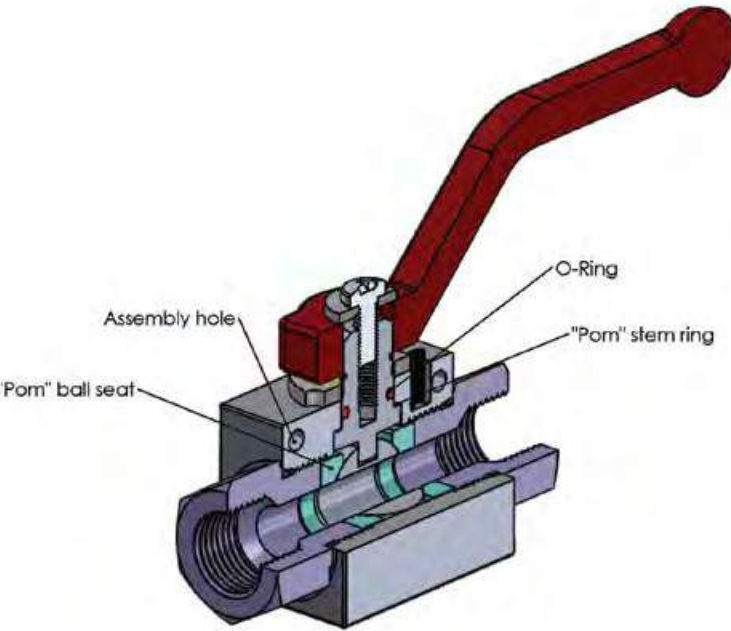
Flow Rate
Up to 690 l / min

Material
Carbon Steel
Aluminum



Product Code	SIZE	ISO DN	Hex A	Port B	C		D		E		F		G		H		J		K		L		Weight Aluminum		Weight Steel	
					mm	inch	mm	inch	mm	inch	mm	inch	mm	inch	mm	inch	mm	inch	mm	inch	mm	inch	kg	lbs	kg	lbs
KV-2401	1/4"	10	24	1/4"	45.5	1.79	74.5	2.93	14.75	0.58	30	1.18	35	1.38	75	2.95	38	1.50	4.0	0.16	146	5.75	0.30	0.66	0.46	1.01
KV-2402	3/8"	10	24	3/8"	45.5	1.79	74.5	2.93	14.75	0.58	30	1.18	35	1.38	75	2.95	38	1.50	4.0	0.16	146	5.75	0.29	0.64	0.44	0.97
KV-2403	1/2"	13	30	1/2"	50.5	1.99	83	3.27	16.80	0.66	35	1.38	40	1.57	82	3.23	40	1.57	5.0	0.20	148	5.83	0.42	0.93	0.64	1.41
KV-2404	3/4"	20	38	3/4"	60.5	2.38	97.5	3.84	23.50	0.92	45	1.77	55	2.16	112	4.41	48.5	1.91	6.0	0.24	219	8.62	0.85	1.87	1.27	2.80
KV-2405	1"	25	46	1"	70.5	2.77	119	4.68	27.70	1.09	55	2.16	60	2.36	114	4.49	57.5	2.26	6.0	0.24	240	9.45	1.26	2.78	1.94	4.27
KV-2406	1" 1/4	25	50	1" 1/4	70.5	2.77	134	5.27	27.70	1.09	55	2.16	60	2.36	114	4.49	57.5	2.26	6.0	0.24	240	9.45	1.37	3.02	2.04	4.50
KV-2407	1" 1/2	25	55	1" 1/2	70.5	2.77	141	5.55	27.70	1.09	55	2.16	60	2.36	114	4.49	57.5	2.26	6.0	0.24	240	9.45	1.5	3.31	2.17	4.78

BENEFITS



- KV2 Series hydraulic 2-Way ball valves are used to either shut-off or open of flow passage and their easy operation provides unrestricted flow.
- Due to their volumetric structure they work rapidly and effcently and prevent cavitation.
- KV2 Series ball valves can be locked in the open or closed position through locking washer on the circle pin.
- Internal ball is hard chrome coated steel and delrin (POM) seated.

SIZE	1/4"		3/8"		1/2"		3/4"		1"		1" 1/4		1" 1/2	
	MPa	psi	MPa	psi	MPa	psi	MPa	psi	MPa	psi	MPa	psi	MPa	psi
Working Pressure (Steel)	50	7251	50	7251	50	7251	40	5801	40	5801	40	5801	35	5076
Working Pressu-re (Aluminum)	35	5076	35	5076	35	5076	25	3626	25	3626	25	3626	20	2901
Burst Pressure (Steel)	100	14500	100	14500	100	14500	95	13779	95	13779	95	13779	85	12328
Burst Pressure (Aluminum)	80	11603	80	11603	80	11603	75	10878	75	10878	75	10878	65	9427
SIZE	1/4"		3/8"		1/2"		3/4"		1"		1" 1/4		1" 1/2	
	l / min	GPM	l / min	GPM	l / min	GPM	l / min	GPM	l / min	GPM	l / min	GPM	l / min	GPM
Max. Fullow Suggested	70	18.5	90	23.8	185	49.0	364	96.2	592	156.5	670	177.0	690	182.3

Fluid:OIL ISO VG46
Temperature:40 C
Viscosity:41.4-50.6 mm2/s
Test Pressure:5 Bar
Test in Accordance:ISO 18869:2017